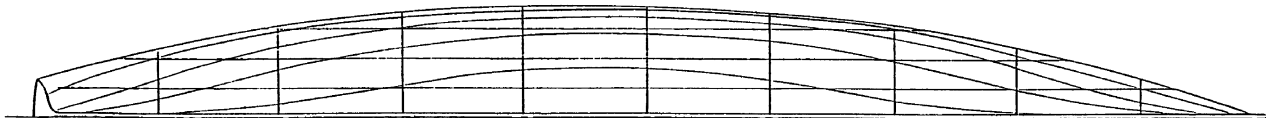




SHEER PLAN

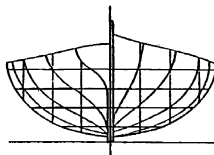


HALF BREADTH PLAN

Stations 2' 1" apart. Lines to inside of planking.  
 Waterlines spaced 4" apart starting 3" above base line.  
 Buttock lines spaced 6" apart starting at centre line.

TABLE of OFFSETS.

Station	Keelson	9	8	7	6	5	4	3	2	1	Bow
Sheer	1-1-1	1-2-6	1-1-6	1-2-2	1-3-7	1-3-6	1-4-3	1-5-2	1-6-2	1-7-7	1-8-7
Butt C	-	-	-	-	0-8-6	0-7-7	0-9-1	1-0-0	-	-	-
Butt B	-	1-3-4	0-9-2	0-5-6	0-4-0	0-3-5	0-4-4	0-6-7	1-2-1	-	-
Butt A	1-5-0	0-9-6	0-5-6	0-2-1	0-1-7	0-1-6	0-2-2	0-3-6	0-7-0	1-3-6	-
Keel	0-2-2	0-1-2	0-1-0	0-0-1	Some	2 base	line	0-0-4	0-1-2	0-2-6	-
Sheer	0-7-3	1-1-2	1-6-0	1-8-3	1-9-4	1-9-6	1-8-2	1-5-7	1-1-2	0-6-6	-
WL IV	0-3-5	1-0-0	1-5-0	1-8-0	1-9-0	1-9-6	1-8-2	1-5-6	1-0-5	0-5-7	-
WL III	0-0-7	0-7-5	1-2-1	1-6-0	1-7-4	1-8-0	1-6-6	1-3-7	0-10-0	0-3-4	-
WL II	0-0-4	0-3-4	0-9-4	1-2-0	1-5-5	1-6-6	1-3-3	0-11-2	0-5-4	0-1-4	-
WL I	0-0-6	0-1-0	0-2-4	0-4-2	0-5-2	0-9-4	0-7-6	0-3-3	0-1-0	-	-



BODY PLAN

SINGLE (LETTING) SKIFF Length overall 20' 10"  
 Beam 3' 7 1/2"

Believed built about 1921 at Eton Boat House  
 Out of Honduras Mahogany, English Oak & Pitchpine